
	<input type="checkbox"/> Preliminary Specification <input checked="" type="checkbox"/> Product Specification	
	Standard Product	Part Number: TM123XDHP90 Version: 1.0

Specification

Tianma Part Number: TM123XDHP90-00
Description: 12.3" TFT LCD Module SFT

	Department	Name	Signature
Tianma	Integrate Project Manager	Jon Miller	
	Project Management	Du Feixiong	
Customer			

	<input type="checkbox"/> Preliminary Specification <input checked="" type="checkbox"/> Product Specification	
	Standard Product	Part Number: TM123XDHP90 Version: 1.0

Revision History

Version	Page	Revision Items	Name	Date
V0.1	All	First release	Zhu Tiantian	20160530
V0.2	4,5,6,7, 8,9,15, 19	Update module weight, Update connector type, Add de-rating curve, Update power sequence, Update drawing, Remove initial code.	Zhu Tiantian	20160608
V0.3	5,6,8,9, 10,14, 19,21	Update pin assignment, Update DC Characteristics for Panel Driving, Update de-rating curve, Update input timing chart, Delete response time @-40°C, update test condition, Update drawing, Update bright spots inspection standard,	Zhu Tiantian	20160705
V1.0	5,7,9,12, 16,17, 18,19,23	Update general spec of Haze and reflection. Update pin assignment, Update electrical characteristics, Update optical characteristics, Update reliability test, Update cosmetic inspection criteria.	Du Feixiong	20170111



	<input type="checkbox"/> Preliminary Specification <input checked="" type="checkbox"/> Product Specification	
	Standard Product	Part Number: TM123XDHP90 Version: 1.0

Table of Contents

1. Precautions for Use of LCD Modules	4
2. General Specifications	5
3. Input / Output Terminals	6
4. Absolute Maximum Ratings.....	8
5. Electrical Characteristics	9
6. Optical Characteristics	16
7. Reliability Test.....	19
8. Mechanical Drawing.....	21
9. Product Inspection Criteria.....	22
10. Packing Instruction.....	24
11. Appendix.....	25

	<input type="checkbox"/> Preliminary Specification <input checked="" type="checkbox"/> Product Specification	
	Standard Product	Part Number:TM123XDHP90 Version: 1.0

1. Precautions for Use of LCD Modules

1.1 Handling Precautions


- 1.1.1 The display panel is made of glass. Do not subject it to a mechanical shock by dropping it from a high place, etc.
- 1.1.2 If the display panel is damaged and the liquid crystal substance inside it leaks out, be sure not to get any in your mouth, if the substance comes into contact with your skin or clothes, promptly wash it off using soap and water.
- 1.1.3 Do not apply excessive force to the display surface or the adjoining areas since this may cause the color tone to vary.
- 1.1.4 The polarizer covering the display surface of the LCD module is soft and easily scratched. Handle the polarizer carefully.
- 1.1.5 If the display surface is contaminated, breathe on the surface and gently wipe it with a soft dry cloth. If still not completely clear, moisten cloth with one of the following solvents:
- Isopropyl alcohol
 - Ethyl alcohol
- Solvents other than those mentioned above may damage the polarizer. Especially, do not use the following:
- Water
 - Ketone
 - Aromatic solvents
- 1.1.6 Do not attempt to disassemble the LCD Module.
- 1.1.7 If the logic circuit power is off, do not apply the input signals.
- 1.1.8 To prevent destruction of the elements by static electricity, be careful to maintain an optimum work environment.
- 1.1.8.1 Be sure to ground the body when handling the LCD Modules.
- 1.1.8.2 Tools required for assembly, such as soldering irons, must be properly grounded.
- 1.1.8.3 To reduce the amount of static electricity generated, do not conduct assembly and other work under dry conditions.
- 1.1.8.4 The LCD Module is covered with a film to protect the display surface. Be carefully and slowly when peeling off this protective film since static electricity may be generated.

1.2 Storage precautions

- 1.2.1 When storing the LCD modules, avoid exposure to direct sunlight or to the light of fluorescent lamps.
- 1.2.2 The LCD modules should be stored under the storage temperature range. the recommend condition is: Temperature : 0°C ~ 40°C, Relatively humidity: ≤80%, and no more than 1 year..
- 1.2.3 The LCD modules should be stored in the room without acid, alkali and sulfur compound harmful gas, etc.

1.3 Transportation Precautions

- 1.3.1 The LCD modules should be no falling and violent shocking during transportation, and also should avoid excessive press, water, damp and sunshine.

	<input type="checkbox"/> Preliminary Specification <input checked="" type="checkbox"/> Product Specification	
	Standard Product	Part Number:TM123XDHP90 Version: 1.0

2. General Specifications

This is 12.3 inch Amorphous-TFT-LCD (Thin Film Transistor Liquid Crystal Display) module. It is composed of a 12.3 inch TFT-LCD panel, LCD Driver IC with T-con integrated, FPC and a backlight unit.

This TFT-LCD Normally Black technology module which is designed for Automotive and other high reliability electronic products required high performance flat panel displays.


Requirements on Environmental Protection of this 12.3 inch module are Following *RoHS*.

Feature		Spec	Remark
Display Spec.	Size	12.3 inch	
	Resolution	1920(RGB) x 720	
	Interface	2 port LVDS (VESA)	
	Color Depth	16.7M	
	Technology Type	a-Si	
	Pixel Pitch (mm)	0.15225 x 0.15225	
	Pixel Configuration	R.G.B. Vertical Stripe	
	Display Mode	Transmissive with Normally Black	
	Surface Treatment(Up Polarizer)	AG	
	Haze (Up polarizer)	Typ 28%	
	Reflection	SCI Max 6%	
	Gray Scale Inversion Direction	NA	
	Viewing Direction	NA	
LCM (W x H x D) (mm)	311.00 x 130.00 x 8.5 (typ.)	Note 2	
Mechanical Characteristics	Active Area(mm)	292.32×109.62	
	With /Without Touch Panel	Without	
	Weight (g)	490	Note 3
	LED Configuration	4 parallels 10serials	

Note 1: Requirements on Environmental Protection: RoHS.

Note 2: The height dimension does not include the FPC and Screw.

Note 3: LCM weight tolerance: $\pm 10\%$.


	<input type="checkbox"/> Preliminary Specification <input checked="" type="checkbox"/> Product Specification	
	Standard Product	Part Number:TM123XDHP90 Version: 1.0

3. Input / Output Terminals

3.1 Pin assignment for TFT Interface

Connector type: IMSA-9685S-50B-GFN4

Pin NO.	P/I/O	Pin Define	Description	Remark
1	P	GND	Ground	
2	P	GND	Ground	
3	P	GND	Ground	
4	P	VDD	3.3+/-0.3V	
5	P	VDD	3.3+/-0.3V	
6	P	VDD	3.3+/-0.3V	
7	P	VDD	3.3+/-0.3V	
8	P	GND	Ground	
9	P	GND	Ground,for tianma OTP use	
10	P	GND	Ground,for tianma OTP use	
11	N	NC	Not Connect,for tianma OTP use	
12	P	GND	Ground	
13	I	OLV2N	Odd LVDS data input 2-	
14	I	OLV2P	Odd LVDS data input 2+	
15	P	GND	Ground	
16	I	OLV1N	Odd LVDS data input 1-	
17	I	OLV1P	Odd LVDS data input 1+	
18	P	GND	Ground	
19	I	OLV0N	Odd LVDS data input 0-	
20	I	OLV0P	Odd LVDS data input 0+	
21	P	GND	Ground	
22	I	OLV3N	Odd LVDS data input 3-	
23	I	OLV3P	Odd LVDS data input 3+	
24	P	GND	Ground	
25	I	OLVCKN	Odd LVDS Clock input -	
26	I	OLVCKP	Odd LVDS Clock input +	
27	P	GND	Ground	
28	I	ELVCKN	Even LVDS Clock input -	
29	I	ELVCKP	Even LVDS Clock input +	
30	P	GND	Ground	
31	I	ELV1N	Even LVDS data input 1-	
32	I	ELV1P	Even LVDS data input 1+	
33	P	GND	Ground	
34	I	ELV3N	Even LVDS data input 3-	
35	I	ELV3P	Even LVDS data input 3+	
36	P	GND	Ground	
37	I	ELV2N	Even LVDS data input2 -	
38	I	ELV2P	Even LVDS data input2+	
39	P	GND	Ground	
40	I	ELV0N	Even LVDS data input 0-	

	<input type="checkbox"/> Preliminary Specification <input checked="" type="checkbox"/> Product Specification	
	Standard Product	Part Number: TM123XDHP90 Version: 1.0

41	I	ELV0P	Even LVDS data input 0+	
42	P	GND	Ground	
43	I	RESETB	Global reset pin, active low.	
44	I	STBYB	Standby mode setting pin, active low.	
45	I	SHLR	Horizontal shift direction (source output) selection	
46	I	UPDN	Vertical shift direction (gate output) selection	
47	I/O	Fail_T	Output for fail detection	Note 3
48	P	GND	Ground	
49	N	NC	no connect	
50	N	NC	no connect	

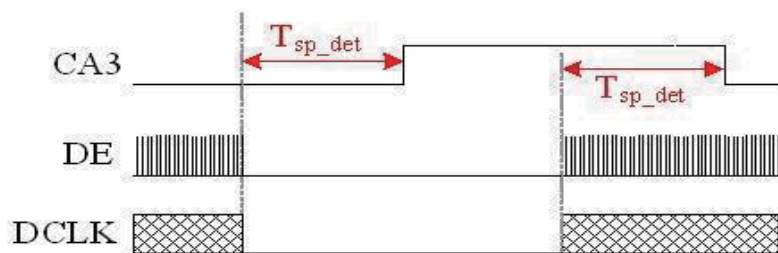
Table 3.1.1 Pin assignment for TFT interface

Note1: All of GND pins should be connected to system ground.

Note2: I/O definition.

I---Input, O---Output, P--- Power/Ground, N--- No connection

Note3: Fail_T: normally pull L in IC, active "H"



When CLK lost, $T_{sp_det} = 23.8\text{ms}$

When DE lost, $T_{sp_det} = 45.9\text{ms} \sim 91.9\text{ms}$ (assume DCLK = 45MHz)

Fail_T is an I/O pin, this pin is defined for fail detection .please keep no any pull up or pull down resistor connect this pin on your system when this pin is used for fail detection.

Note4: Scan Direction Control Description


The level of TB and RL signal control vertical shift direction and horizontal shift direction. Relationship between source output and RL.

SHLR	Source output sequence and data order	Remark
H	Left→Right	Default
L	Right→Left	-

Relationship between vertical shift direction and TB.

UPDN	Function	Remark
H	Top→ Bottom	Default
L	Bottom→ Top	-

Table 3.1.2 Scan direction Description

	<input type="checkbox"/> Preliminary Specification <input checked="" type="checkbox"/> Product Specification	
	Standard Product	Part Number: TM123XDHP90 Version: 1.0



(Default)

Figure 3.1.2 Scan direction Description

3.2 Pin assignment for backlight interface

Connector type: IMSA-9685S-10A-GFN4

No	Symbol	I/O	Description	Remark
1	A1 A2	P	LED Anode	
2	A3 A4	P	LED Anode	
3	GND	P	Ground	
4	THER+	P	Thermistor +	
5	THER-	O	Thermistor -	
6	GND	O	Ground	
7	C4	P	LED Cathode	
8	C3	P	LED Cathode	
9	C2	P	LED Cathode	
10	C1	P	LED Cathode	

Table 3.2.1 Pin assignment for backlight interface

4. Absolute Maximum Ratings

GND=0V

Item	Symbol	Min	Max	Unit	Remark
Logic supply voltage	VDD	-0.3	3.96	V	
Operating Temperature	Top	-40	85	°C	Note1
Storage Temperature	Tst	-40	95	°C	Note2


Table 4.1.1 absolute maximum rating

Note1: During -40~-30°C (ambient), the operating performance is not guaranteed except functional failure occurs

Note2: Only for TFT module. For optical bonding, it is suggested shall not exceed 90°C.

Note3: If the voltage exceeds its absolute maximum ratings, the LCM may be damaged. If the LCM is operated with the absolute maximum ratings for a long time, performance will decreased.

Note4: Functional operation should be restricted under normal ambient temperature.

	<input type="checkbox"/> Preliminary Specification <input checked="" type="checkbox"/> Product Specification	
	Standard Product	Part Number: TM123XDHP90 Version: 1.0

5. Electrical Characteristics

5.1 DC Characteristics for Panel Driving

GND=0V, Ta=25°C

Item	Symbol	MIN	TYP	MAX	Unit	Remark
Supply voltage	VDD	3.0	3.3	3.6	V	
Supply current	IVDD		460	600	mA	NOTE1
Permissible Ripple Voltage of VDD	Vr			100	mV	
Input High Voltage	V _{IH}	0.8*VDD		VDD+0.3	V	
Input Low Voltage	V _{IL}	GND-0.3		0.2*VDD	V	

Table 5.1.1 Operating voltage


Parameter	Symbol	Condition	Spec			Unit
			Min	Typ	Max	
Differential input high threshold voltage	V _{th}	VCM=1.2V	+0.1	-	-	V
Differential input low threshold voltage	V _{tl}		-	-	-0.1	V
Differential input common mode voltage	VCM	-	1	1.2	1.7- Vid /2	V
LVDS input voltage	VINLV	-	0.7	-	1.7	V
NLVDS common mode voltage	ΔVCM	1V < VCM < 1.6V	No limit	-	-	-
NLVDS common mode voltage	ΔVCM	1V ≥ VCM or VCM ≥ 1.6V	-	-	250mV	mV
Differential input voltage	Vid	-	0.4	-	0.6	V
Differential input leakage current	I _{lvleak}	-	-10	-	+10	uA

Table 5.1.2 LVDS mode DC electrical characteristics

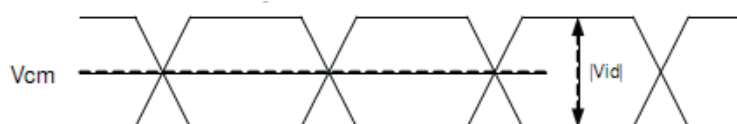
Note 1: Test at white pattern, Ta=25°C, f=60HZ, VCC=3.3V.

Note 2: Above of all these items spec is the precondition that panel can operate normally.

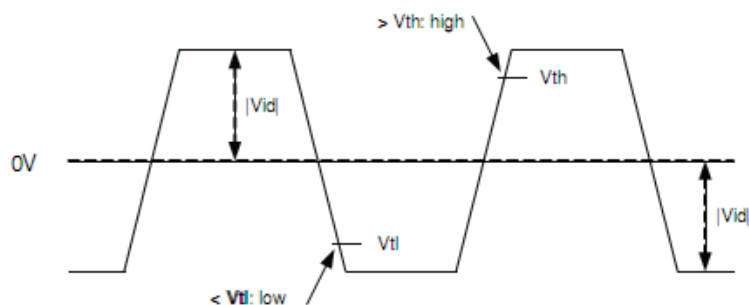
Note 3: Description of |Vid| is as below

	<input type="checkbox"/> Preliminary Specification <input checked="" type="checkbox"/> Product Specification	
	Standard Product	Part Number: TM123XDHP90

Single-ended:
LVCLKP(R),
LVCLKN(R),
LVD[3:0]P(R),
LVD[3:0]N(R)



Differential:
LVCLKP(R)-LVCLKN(R),
LVD[3:0]P(R)-
LVD[3:0]N(R)



5.2 DC Characteristics for Backlight Driving

Item	Symbol	Min	Typ	Max	Unit	Remark
Forward Current	I_{BL}	--	90	--	mA	Note1
Forward Voltage	V_{BL}	27	30	34	V	
Life Time	-	10000	-	-	Hrs	Note2

Table 5.2.1 LED backlight characteristics

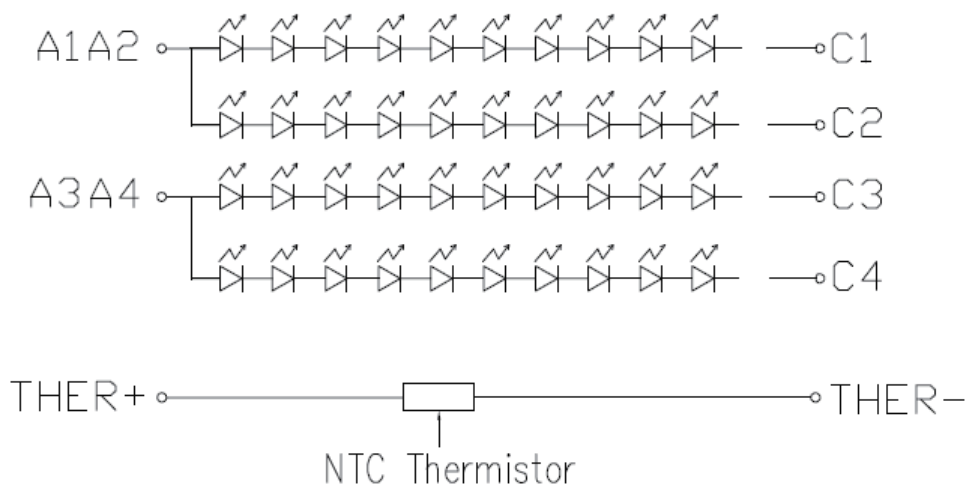



Figure 5.2.2 LED connection of backlight

Note 1: I_{BL} is defined for one channel LED, There are total 4 LED channels in back light unit Under LCM operating, the stable forward current should be inputted.

Note 2: Optical performance should be evaluated at $T_a=25^{\circ}\text{C}$ only. If LED is driven by high current, high ambient temperature & humidity condition. The life time of LED will be reduced. Operating life means brightness goes down to 80% of original brightness.

Note 3: The LED circuit de-rating curve refers to figure 5.2.3

	<input type="checkbox"/> Preliminary Specification <input checked="" type="checkbox"/> Product Specification	
	Standard Product	Part Number: TM123XDHP90 Version: 1.0

Note 4: A NTC thermistor is included in the LED circuit and the part number is NCP15XH103F0SRC.

Item	Value	Remarks
Type	NCP15XH103F0SRC	Murata
Resistance / Tolerance	10kΩ±1%	RTa=25°C
Permissive Operating Current	0.31mA	Ta=25°C

TM123XDHP90 De-rating curve

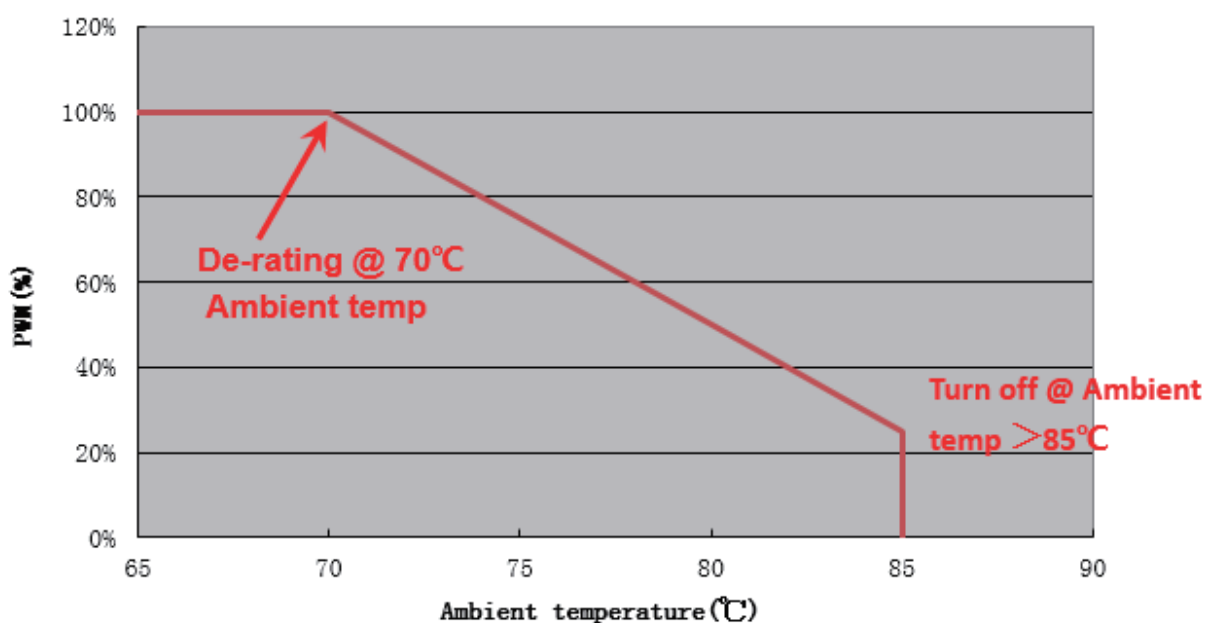



Figure 5.2.3 De-rating Curve for LCM operating

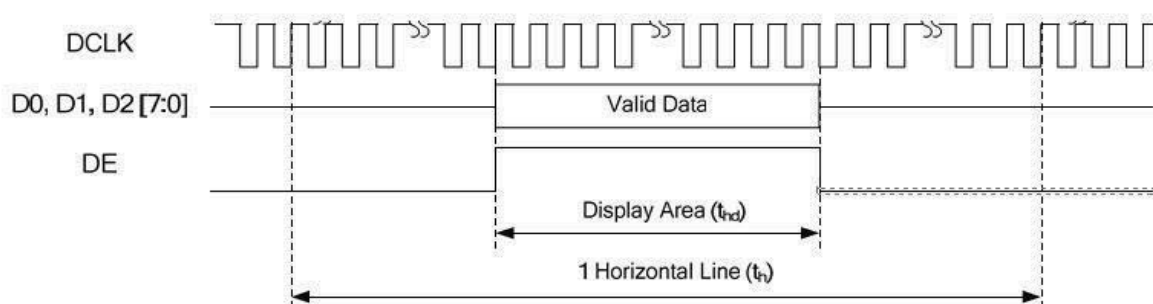
	<input type="checkbox"/> Preliminary Specification <input checked="" type="checkbox"/> Product Specification	
	Standard Product	Part Number: TM123XDHP90 Version: 1.0

5.3 Input Signal Timing

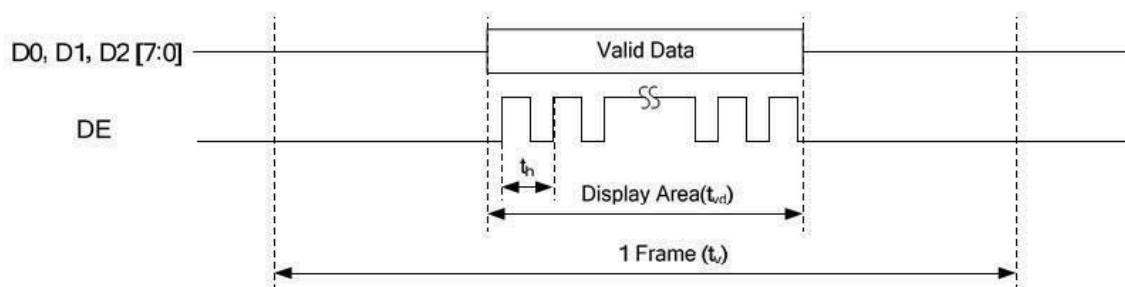
Parameter	Symbol	Unit	Min.	Typ.	Max.	Remark
Clock Frequency	f_{dck}	MHz		49.28		
H Total Time	T_h	clocks	984	992	1140	
H Active Time	T_{hd}	clocks	960			
V Total Time	T_v	lines	730	828	828	
V Active Time	T_{vd}	lines	720			
V Frequency	f_v	Hz	50	60	65	


Input timing chart

• Horizontal

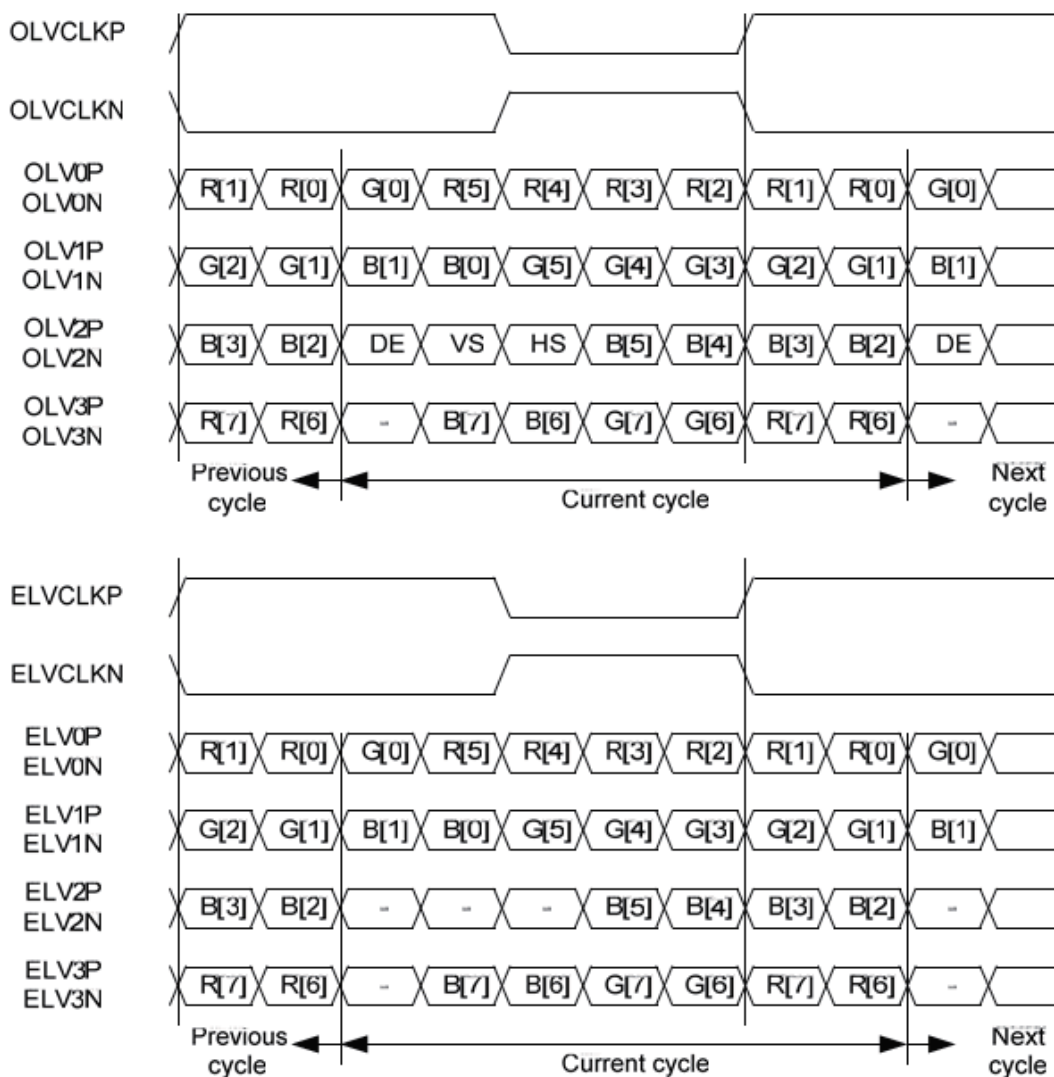


• Vertical




	<input type="checkbox"/> Preliminary Specification <input checked="" type="checkbox"/> Product Specification	
	Standard Product	Part Number: TM123XDHP90 Version: 1.0

Data Mapping

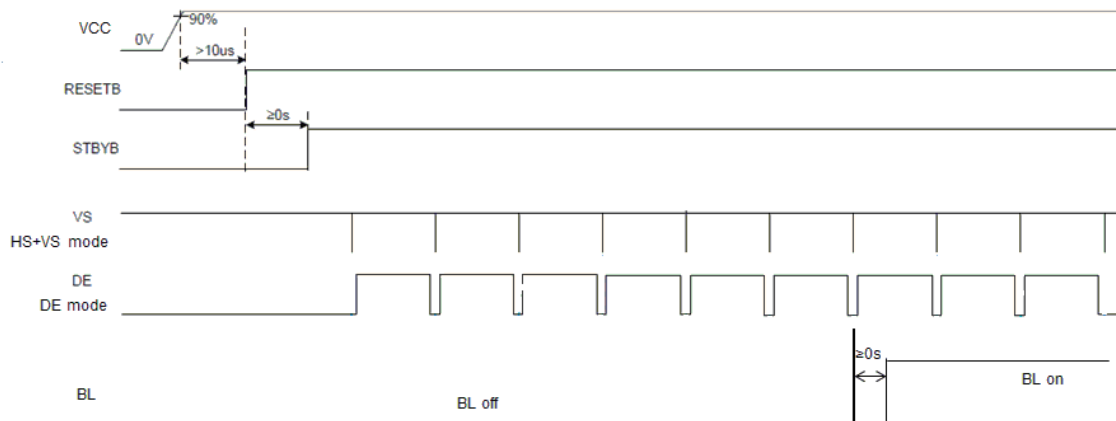


WWW

	<input type="checkbox"/> Preliminary Specification <input checked="" type="checkbox"/> Product Specification	
	Standard Product	Part Number: TM123XDHP90

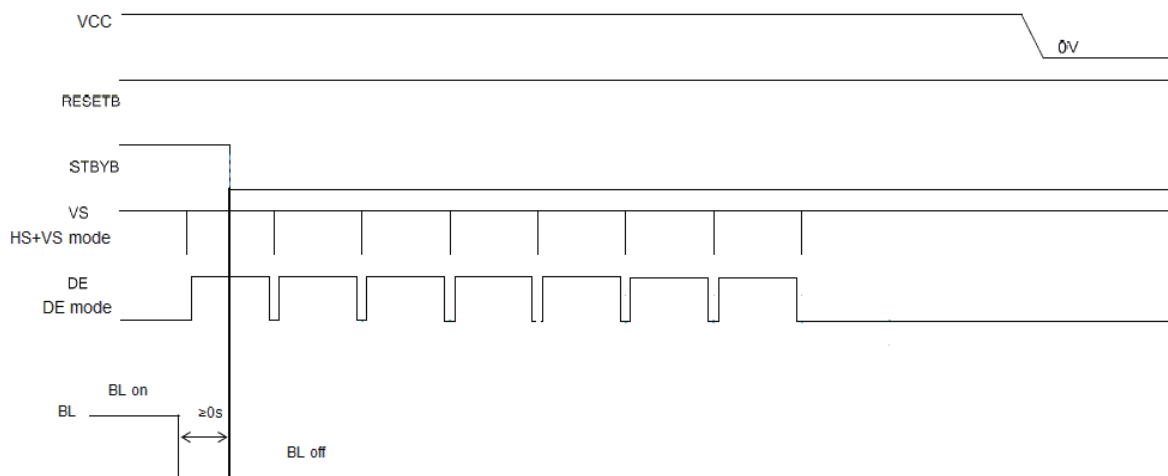
5.4 Recommended Power ON/OFF Sequence


Power on sequence



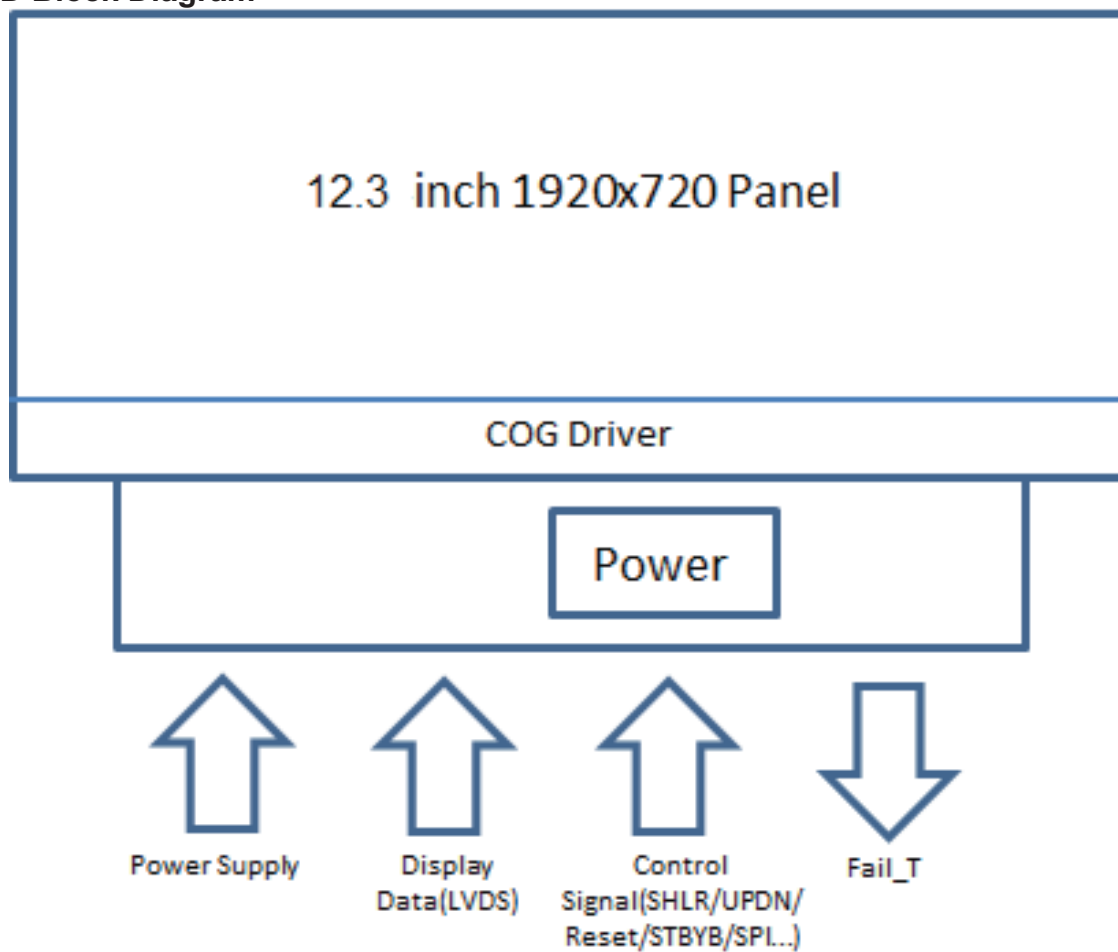
Note: (1) The LVDS signals must start to send all relate signals before 20ms or after 100ms from STBYB rising.


Power off sequence



	□ Preliminary Specification ■ Product Specification	
	Standard Product	Part Number: TM123XDHP90 Version: 1.0

5.5 LCD Block Diagram




	<input type="checkbox"/> Preliminary Specification <input checked="" type="checkbox"/> Product Specification	
	Standard Product	Part Number: TM123XDHP90 Version: 1.0

6. Optical Characteristics

Item	Symbol	Condition	Min	Typ	Max	Unit	Remark
Contrast Ratio	CR	Perpendicular ,25°C	800	1000	--		Note1 Note3
View angle	--	V:-25°/+35° H:-40°/+40° ,25°C	100	--	--		Note2
Response Time	Ton+Toff	25°C	--	25	30	ms	Note4
		-20°C	--	200	250		
		-30°C	--	350	600		
Chromaticity	White	Backlight is on	0.280	0.310	0.340	Note1 Note5	
			0.300	0.330	0.360		
	Red		0.616	0.646	0.676		
			0.296	0.326	0.356		
	Green		0.282	0.312	0.342		
			0.594	0.624	0.654		
	Blue		0.122	0.152	0.182		
			0.025	0.055	0.085		
Uniformity	White	15 points	80	--	--	%	Note1 Note6
	Black		50	--	--		
NTSC		Perpendicular	--	75	--	%	Note5
Gamma	γ		2.2	2.4	2.6		Note7
Flicker ratio					-30	dB	Note9
Luminance	L	Perpendicular	800	1000	--	cd/m ²	Note1 Note8
		40°/0°	440				
		30°/90°	440				
		40°/180°	440				
		25°/270°	440				

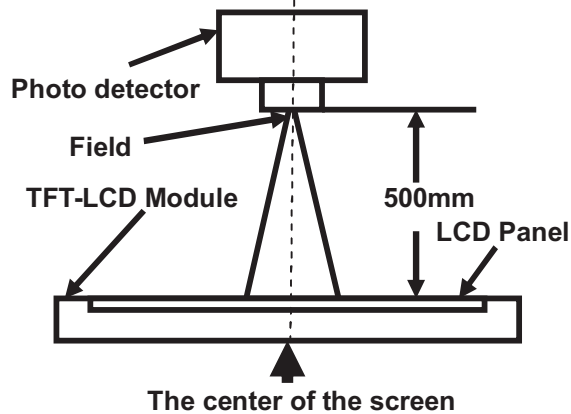
Test Conditions:

1. $I_F = 90\text{mA}$ (one channel), the ambient temperature is 25°C.
2. The test systems refer to Note 1 and Note 2.

	<input type="checkbox"/> Preliminary Specification <input checked="" type="checkbox"/> Product Specification	
	Standard Product	Part Number: TM123XDHP90

Note 1: Definition of optical measurement system.

The optical characteristics should be measured in dark room. After 5 minutes operation, the optical properties are measured at the center point of the LCD screen. All input terminals LCD panel must be ground when measuring the center area of the panel.



Item	Photo detector	Field	High
Contrast Ratio	SR-3	1°	H=500 mm
Luminance			
Chromaticity			
Lum Uniformity			
Response Time	LCD5200 or DMS	3mm	H=200 mm

Note 2: Definition of viewing angle range and measurement system

Viewing angle is measured at the center point of the LCD by EZ-Contrast .
FPC at $\phi=90^\circ$, the measurement area is V:-25°/+35°H:-40°/+40°

Note 3: Definition of contrast ratio

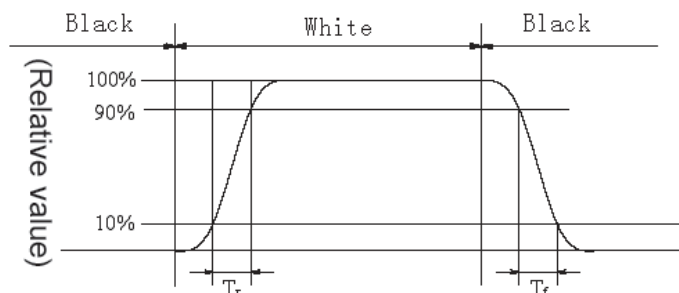
“White state “:The state is that the LCD should be driven at level 255 gray

“Black state”: The state is that the LCD should be driven at level 0 gray

$$\text{Contrast ratio (CR)} = \frac{\text{Luminance measured when LCD is on the "White" state}}{\text{Luminance measured when LCD is on the "Black" state}}$$


Note 4: Response time ($T_{on} + T_{off}$)

The response time is defined as the LCD optical switching time interval between “White” state and “Black” state. Rise time (T_{on}) is the time between photo detector output intensity changed from 10% to 90%. And fall time (T_{off}) is the time between photo detector output intensity changed from 90% to 10%., Refer to below, measured by LCD5200 or DMS.



Note 5: Definition of color chromaticity (CIE1931)

Color coordinates measured at center point of LCD.

	<input type="checkbox"/> Preliminary Specification	<input checked="" type="checkbox"/> Product Specification
	Standard Product	Part Number: TM123XDHP90

Note 6: Definition of Luminance Uniformity

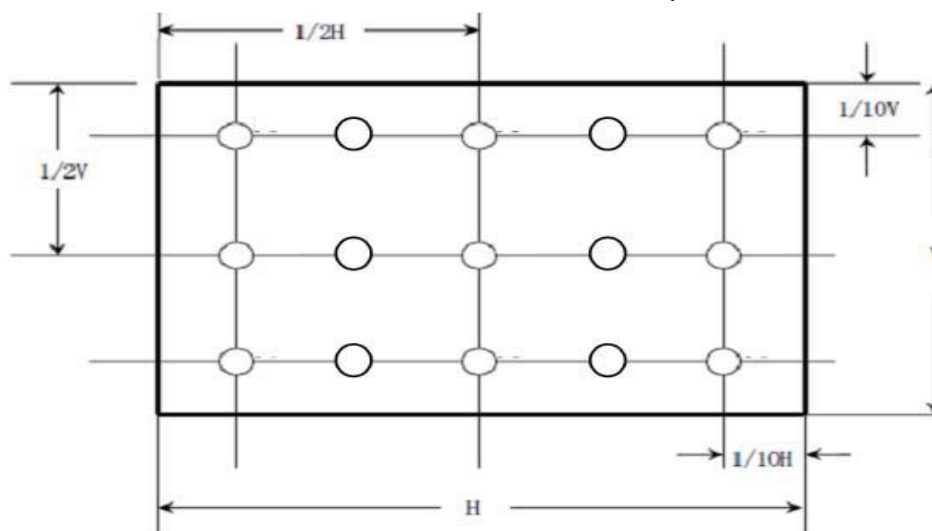
Active area is divided into 15 measuring areas . Every measuring point is placed at the center of each measuring area.

Luminance Uniformity (U) = L_{min} / L_{max}

L-----Active area length W----- Active area width

Lmax: The measured Maximum luminance of all measurement position.

Lmin: The measured Minimum luminance of all measurement position.



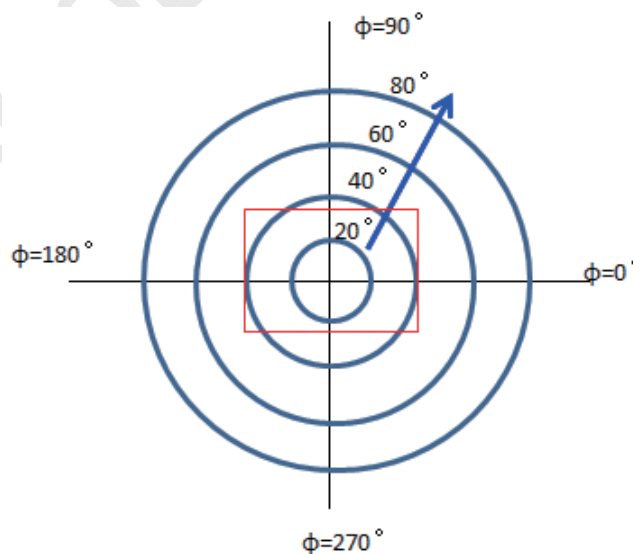
Note 7: Definition of Gamma

Measurement and evaluation to be performed according Information Displays Measurement Standard Version 1.03 (2012-Jun-01) section 6.3.


Note 8: Definition of luminance

Luminance is measured at the center point of the LCD by EZ-Contrast .

FPC at $\phi=90^\circ$, the measurement points are $40^\circ/0^\circ$, $30^\circ/90^\circ$, $40^\circ/180^\circ$ and $25^\circ/270^\circ$.



Note9: The value dB base on JEITA method.

	<input type="checkbox"/> Preliminary Specification <input checked="" type="checkbox"/> Product Specification	
	Standard Product	Part Number:TM123XDHP90 Version: 1.0

7. Reliability Test

7.1 Content of Reliability Test

No	Test Item	Condition	Judgment
1	High Temperature Operation	Ts=+85°C +/-2°C ,500 hours Operating, Restore 2H at 25°C	note1, note2, note3, note4
2	Low Temperature Operation	Ts= -30°C +/-2°C,500 hours Operating, Restore 2H at 25°C	note1, note2, note3, note4
3	High Temperature Storage	Ts= 95°C +/-2°C,500 hours Not Operating, Restore 2H at 25°C	note1, note2, note3, note4
4	Low Temperature Storage	Ts=-40°C +/-2°C,500 hours Not Operating, Restore 2H at 25°C	note1, note2, note3, note4
5	High Temperature & Humidity Operation	Ts=+60°C +/-2°C 90% +/-3% RH ,500 hours Operating, Restore 2H at 25°C	note1, note2, note3, note4
6	Thermal Shock	Ts=+85°C(0.5hour)/-40°C(0.5hour) for 100 cycles Not Operating	note1, note2, note3, note4
7	Electrostatic Discharge	C=150pF±10%, R=330Ω±10%, 5 point/panel surface, Contact discharge: ±8kV, 5times Air discharge: ±15kV, 5times (Environment:15°C~35°C, 30%~60%. 86Kpa~106Kpa)	note 5
8	Vibration Test	Frequency: 8 - 33.3 Hz, Total amplitude: 1.3mm Frequency: 33.3 - 400 Hz, Acceleration: 29.4 m/s ² sweep time: 15 minutes 2 hours each for X and Z directions, 4 hours for Y direction (total 8 hours) non-operation	note 2
9	Mechanical Shock	980m/s ² , 6ms, ± X; ± Y; ± Z, 2 times for each direction	note 2

Note 1: Ts: Panel Surface temperature.

Note 2: The test result shall be evaluated after the sample has been left at room temperature and humidity for 2 hours without load. No condensation shall be accepted. The sample shall be free from defects:


- 1). Air bubble in the LCD;
- 2). Seal leak
- 3). Non-display
- 4). Missing segments
- 5). Glass crack

Note 3: Each test item applies for a test sample only once, the test sample cannot be used again in any other test item.

Note 4: CR degradation must be less than 50%; Brightness degradation must be less than 50%.


Note 5: ESD check details as below:

For A-D Criterion, Tianma will judge panel as OK. If E condition happened in customer system,

	<input type="checkbox"/> Preliminary Specification <input checked="" type="checkbox"/> Product Specification	
	Standard Product	Part Number: TM123XDHP90 Version: 1.0

Tianma should support to analyze and find out the solution together with customer.

Class	Performance
A	All functions perform as designed during and after exposure to interference
B	Temporary degradation or less of performance which is self-recoverable
C	Degradation or less of performance which requires operator intervention to recover
D	Degradation or less of performance which requires system reset to recover
E	Degradation or less of function which is not recoverable

	<input type="checkbox"/> Preliminary Specification <input checked="" type="checkbox"/> Product Specification	
	Standard Product	Part Number: TM123XDHP90 Version: 1.0

9. Product Inspection Criteria

9.1 Scope:

The incoming inspection standards shall be applied to TFT-LCD Modules (hereinafter called "Modules") that supplied by Tianma Micro-Electronics Corporation.

9.2 Incoming Inspection

The buyer shall inspect the modules within twenty calendar days of the delivery date (the inspection period). The result of the inspection (acceptance or rejection) shall be recorded in writing, and a copy of this writing will be promptly sent to the seller. If the results of the inspecting from buyer does not send to the seller within twenty calendar days of the delivery date. The modules shall be regards as accepted.

9.3 Inspection Sampling Method

Lot size: Quantity per shipment lot per model
 Sampling type: Normal inspection, Single sampling
 Inspection level: II
 Sampling table: MIL-STD-105D
 Acceptable quality level (AQL)
 Major defect: AQL=0.65
 Minor defect: AQL=1.00

9.4 Inspection Conditions

Ambient conditions:

- Temperature: Room temperature $25\pm 5^{\circ}\text{C}$
- Humidity: $(60\pm 10)\% \text{RH}$
- Illumination (the surface of LCD)

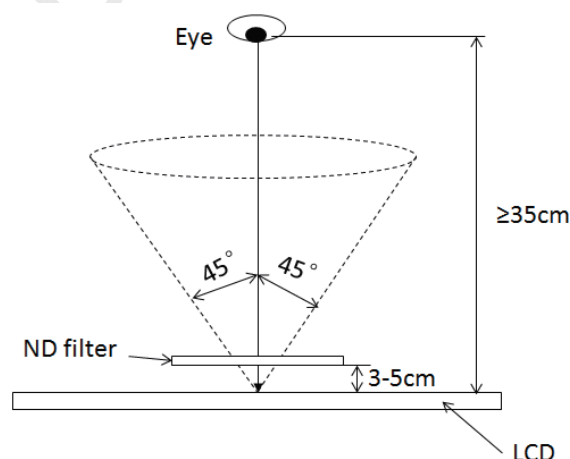
backlight-on	100-300Lux
backlight-off	800-1200lux


Viewing distance

The distance between the LCD and the inspector's eyes shall be 35cm or more.

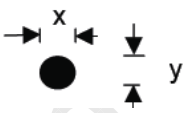


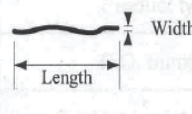
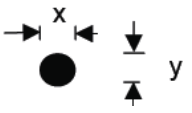

Viewing Angle


U/D: $45^{\circ}/45^{\circ}$, L/R: $45^{\circ}/45^{\circ}$



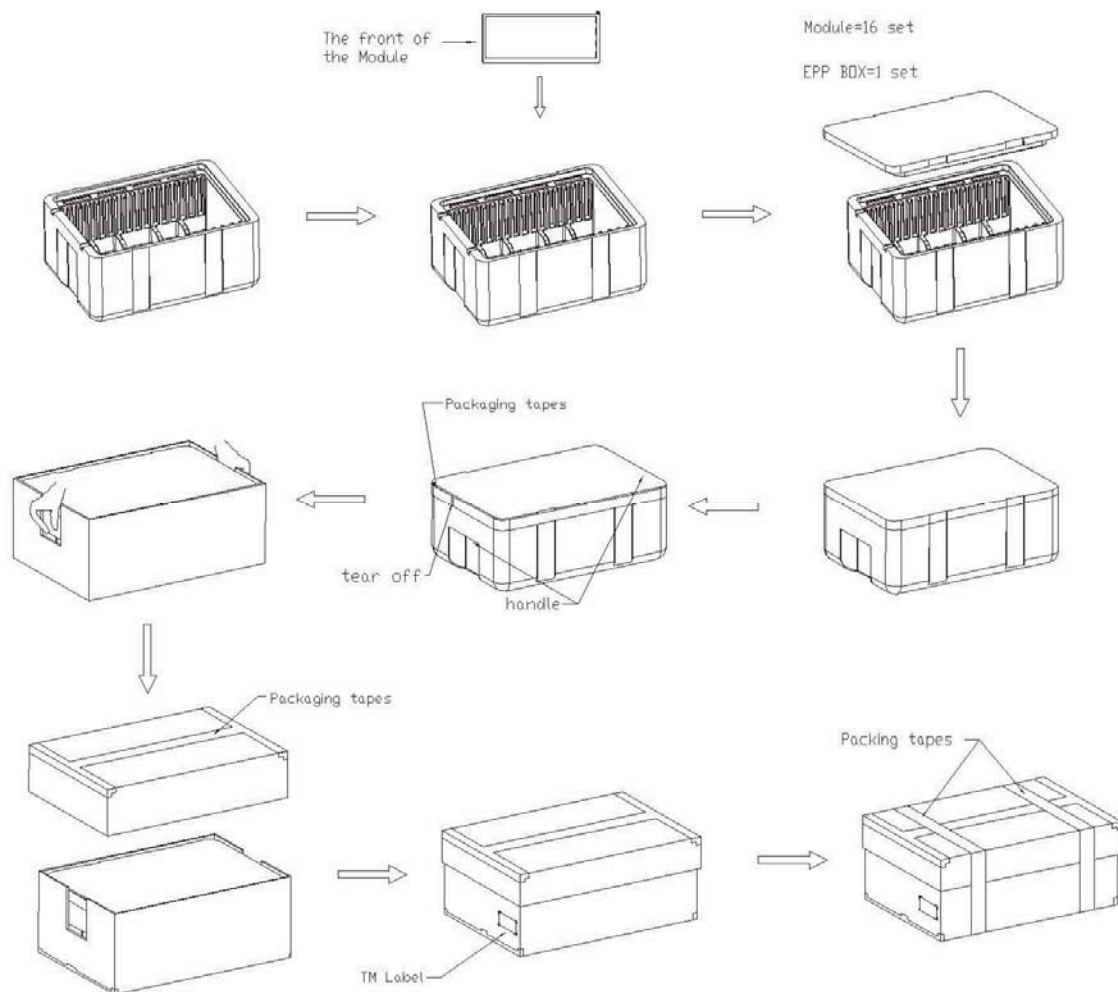
	<input type="checkbox"/> Preliminary Specification <input checked="" type="checkbox"/> Product Specification	
	Standard Product	Part Number: TM123XDHP90 Version: 1.0

9.5 Cosmetic Inspection Criteria


Inspection Item	Inspection Standards	Acceptable Qty.	Applied Zone	Inspection Mode	Note
Dark/Bright spots	$\varphi \leq 0.2$ $0.2 < \varphi \leq 0.3$ $0.3 < \varphi$	Ignore 3 None	A	Backlight-on at full black pattern	$\varphi = (x+y) / 2$ 
Bright pixel dot	1 sub-pixel, Visible through ND2%	None	A	Backlight -on	
Dark pixel dot	1 sub-pixel	5 (distance $\geq 5\text{mm}$)	A	Backlight -on	
Lints & Scratches	$W \leq 0.03$ and $L \leq 3.0$ $0.03 < W \leq 0.05$ and $L \leq 3.0$ $0.05 < W$ or $L > 3.0$	Ignore 3 None	A/B	Backlight -on Backlight -off	
Dent/Bubble	$\varphi \leq 0.2$ $0.2 < \varphi \leq 0.4$ $0.40 < \varphi$	Ignore 4 None	A/B	Backlight -on Backlight -off	$\varphi = (x+y) / 2$ 
Mura	Visible through ND2% at full black pattern	None	A	Backlight -on	
Dirty\Dust	Those wiped out easily are acceptable		A/B	Backlight -off	\
Cluster Tiny Bright Dot	ND5% Invisible		A	Backlight -on	

	<input type="checkbox"/> Preliminary Specification	<input checked="" type="checkbox"/> Product Specification
	Standard Product	Part Number: TM123XDHP90

10. Packing Instruction




No	Item	Model (Material)	Dimensions	Quantity
1	LCM module	TM123XDHP90-00	311×130×8.5mm	16
2	Carton	Corrugated paper	600×440×280mm	1
3	Pallet	Box	2(L)×2(W)×5(H)	20

 TIANMA	□ Preliminary Specification ■ Product Specification	
	Standard Product	Part Number:TM123XDHP90 Version: 1.0

11. Appendix

11.1 The relationship of temperature and resistance for NTC

TEMP (deg.C)	Resistance (kohm)	TEMP (deg.C)	Resistance (kohm)	TEMP (deg.C)	Resistance (kohm)	TEMP (deg.C)	Resistance (kohm)
-40.000	195.652	2.000	24.988	44.000	5.086	86.000	1.413
-39.000	184.917	3.000	23.951	45.000	4.917	87.000	1.375
-38.000	174.845	4.000	22.963	46.000	4.754	88.000	1.338
-37.000	165.391	5.000	22.021	47.000	4.597	89.000	1.303
-36.000	156.513	6.000	21.123	48.000	4.446	90.000	1.268
-35.000	148.171	7.000	20.267	49.000	4.301	91.000	1.234
-34.000	140.330	8.000	19.450	50.000	4.161	92.000	1.202
-33.000	132.958	9.000	18.670	51.000	4.026	93.000	1.170
-32.000	126.022	10.000	17.926	52.000	3.896	94.000	1.139
-31.000	119.494	11.000	17.214	53.000	3.771	95.000	1.110
-30.000	113.347	12.000	16.534	54.000	3.651	96.000	1.081
-29.000	107.565	13.000	15.886	55.000	3.535	97.000	1.053
-28.000	102.116	14.000	15.266	56.000	3.423	98.000	1.026
-27.000	96.978	15.000	14.674	57.000	3.315	99.000	0.999
-26.000	92.132	16.000	14.108	58.000	3.211	100.000	0.974
-25.000	87.559	17.000	13.566	59.000	3.111	101.000	0.949
-24.000	83.242	18.000	13.049	60.000	3.014	102.000	0.925
-23.000	79.166	19.000	12.554	61.000	2.922	103.000	0.902
-22.000	75.316	20.000	12.081	62.000	2.834	104.000	0.880
-21.000	71.677	21.000	11.628	63.000	2.748	105.000	0.858
-20.000	68.237	22.000	11.195	64.000	2.666	106.000	0.837
-19.000	64.991	23.000	10.780	65.000	2.586	107.000	0.816
-18.000	61.919	24.000	10.382	66.000	2.509	108.000	0.796
-17.000	59.011	25.000	10.000	67.000	2.435	109.000	0.777
-16.000	56.258	26.000	9.634	68.000	2.364	110.000	0.758
-15.000	53.650	27.000	9.284	69.000	2.294	111.000	0.740
-14.000	51.178	28.000	8.947	70.000	2.228	112.000	0.722
-13.000	48.835	29.000	8.624	71.000	2.163	113.000	0.705
-12.000	46.613	30.000	8.315	72.000	2.100	114.000	0.688
-11.000	44.506	31.000	8.018	73.000	2.040	115.000	0.672
-10.000	42.506	32.000	7.734	74.000	1.981	116.000	0.656
-9.000	40.600	33.000	7.461	75.000	1.925	117.000	0.640
-8.000	38.791	34.000	7.199	76.000	1.870	118.000	0.625
-7.000	37.073	35.000	6.948	77.000	1.817	119.000	0.611
-6.000	35.442	36.000	6.707	78.000	1.766	120.000	0.596
-5.000	33.892	37.000	6.475	79.000	1.716	121.000	0.583
-4.000	32.420	38.000	6.253	80.000	1.669	122.000	0.569
-3.000	31.020	39.000	6.039	81.000	1.622	123.000	0.556
-2.000	29.689	40.000	5.834	82.000	1.578	124.000	0.544
-1.000	28.423	41.000	5.636	83.000	1.535	125.000	0.531

	<input type="checkbox"/> Preliminary Specification <input checked="" type="checkbox"/> Product Specification	
	Standard Product	Part Number: TM123XDHP90 Version: 1.0

0.000	27.219	42.000	5.445	84.000	1.493		
1.000	26.076	43.000	5.262	85.000	1.452		

www.panelook.com