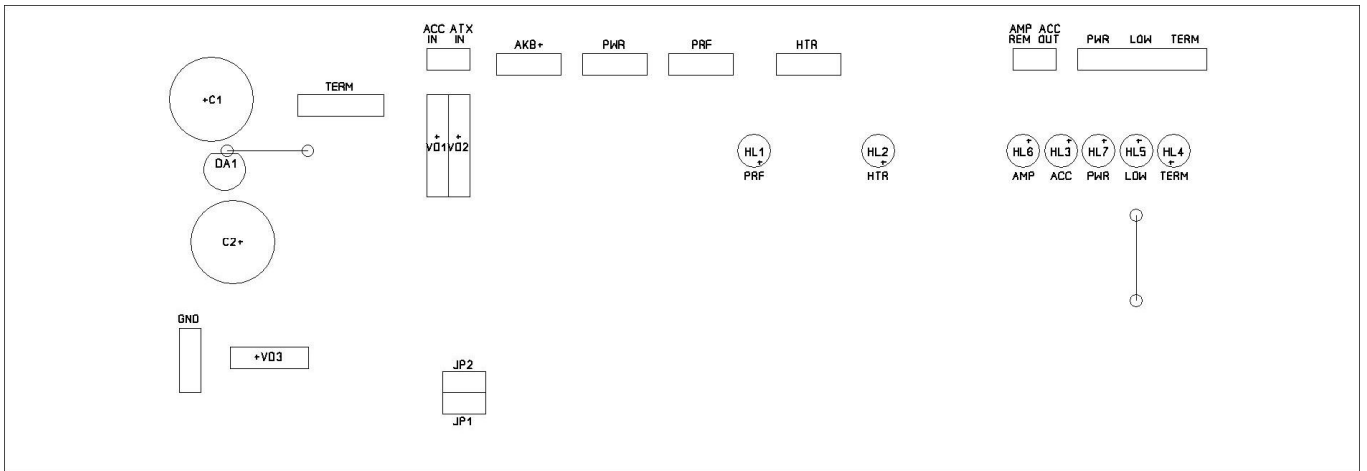
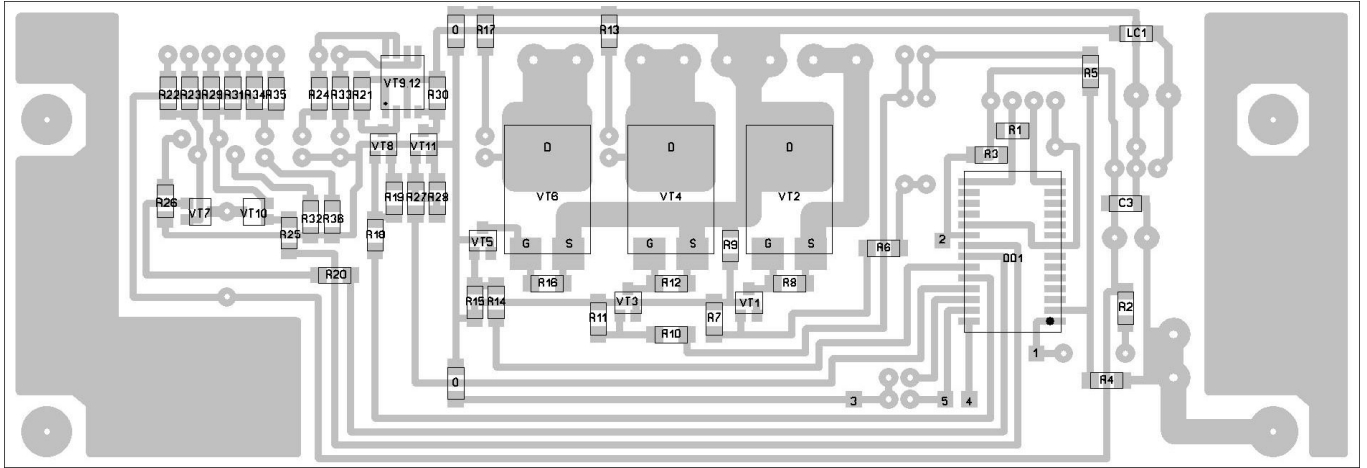


PowerControl v.1.1



C1	= 1000mkf (K50-35)	R6	= 10k (SMD-1206)	R31	= 1k (SMD-1206)
C2	= 1000mkf (K50-35)	R7	= 100k (SMD-1206)	R32	= 1k (SMD-1206)
C3	= 0.1mkf (SMD-1206)	R8	= 1k (SMD-1206)	R33	= 6.2k (SMD-1206)
DA1	= 78L05 (TO92)	R9	= 6.2k (SMD-1206)	R34	= 1k (SMD-1206)
DD1	= PIC16F886 (SO28)	R10	= 10k (SMD-1206)	R35	= 1k (SMD-1206)
HL1	= 3014YD (желтый ф3)	R11	= 100k (SMD-1206)	R36	= 1k (SMD-1206)
HL2	= 3014YD (желтый ф3)	R12	= 1k (SMD-1206)	VD1	= 1N4148
HL3	= 3014YD (желтый ф3)	R13	= 6.2k (SMD-1206)	VD2	= 1N4148
HL4	= (синий ф3)	R14	= 1k (SMD-1206)	VD3	= 1N4148
HL5	= 3014RD (красный ф3)	R15	= 100k (SMD-1206)	VT1	= BC847B (SOT23)
HL6	= 3014YD (желтый ф3)	R16	= 1k (SMD-1206)	VT2	= IRF4905 (D2Pak)
HL7	= 3014GD (зеленый ф3)	R17	= 6.2k (SMD-1206)	VT3	= BC847B (SOT23)
LC1	= NFE31PT152Z1E9	R18	= 1k (SMD-1206)	VT4	= IRF4905 (D2Pak)
R0	= 0 (SMD-1206)	R19	= 100k (SMD-1206)	VT5	= BC847B (SOT23)
R0	= 0 (SMD-1206)	R20	= 1k (SMD-1206)	VT6	= IRF4905 (D2Pak)
R1	= 4.7k (SMD-1206)	R21	= 1k (SMD-1206)	VT7	= BC847B (SOT23)
R2	= 10k (SMD-1206)	R22	= 1k (SMD-1206)	VT8	= BC847B (SOT23)
R3	= 4.7k (SMD-1206)	R23	= 1k (SMD-1206)	VT9	= IRF7314 (SO8)
R4	= 10k (SMD-1206)	R24	= 6.2k (SMD-1206)	VT10	= BC847B (SOT23)
R5	= 20k (SMD-1206)	R25	= 1k (SMD-1206)	VT11	= BC847B (SOT23)
		R26	= 1k (SMD-1206)		
		R27	= 1k (SMD-1206)		
		R28	= 100k (SMD-1206)		
		R29	= 1k (SMD-1206)		
		R30	= 1k (SMD-1206)		