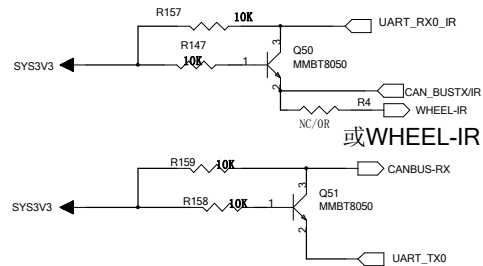
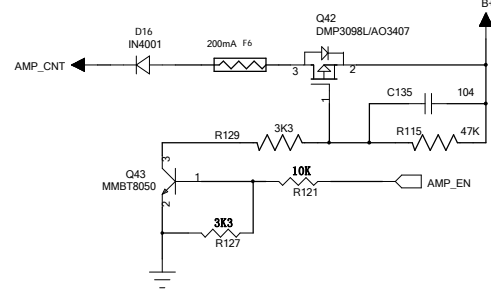


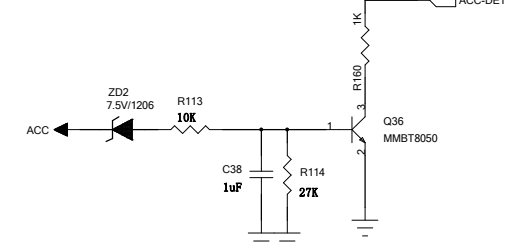
CANBOX



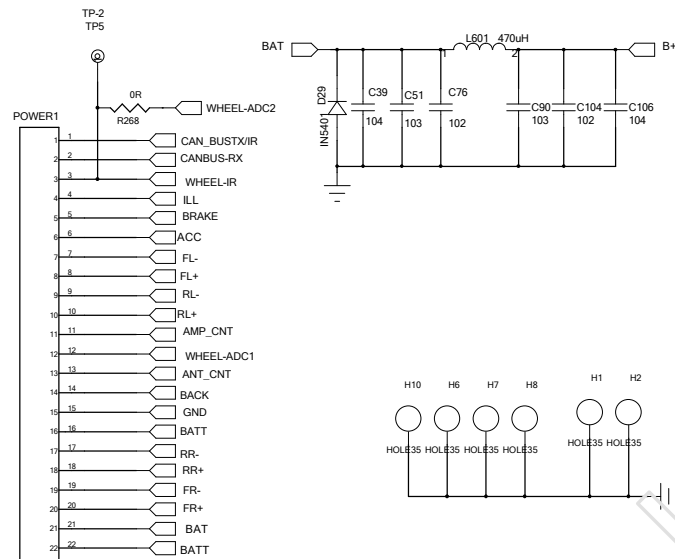
APM-POW



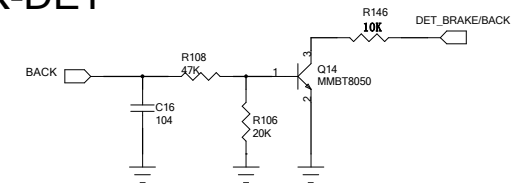
ACC-DET



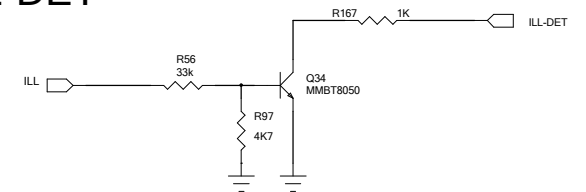
ISO PLUT



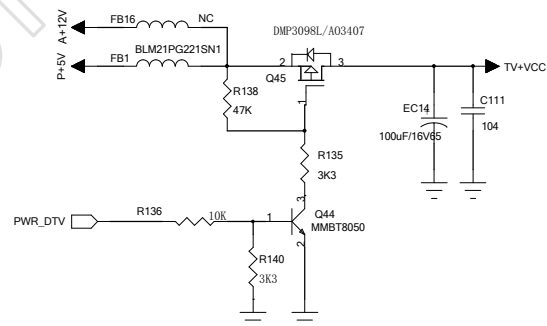
BACK-DET



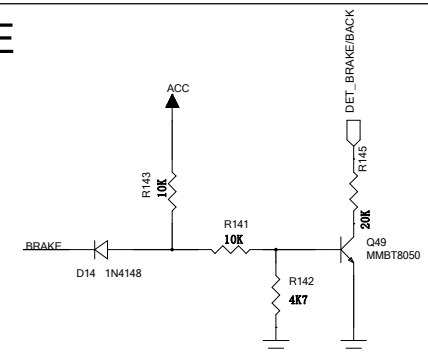
ILL-DET



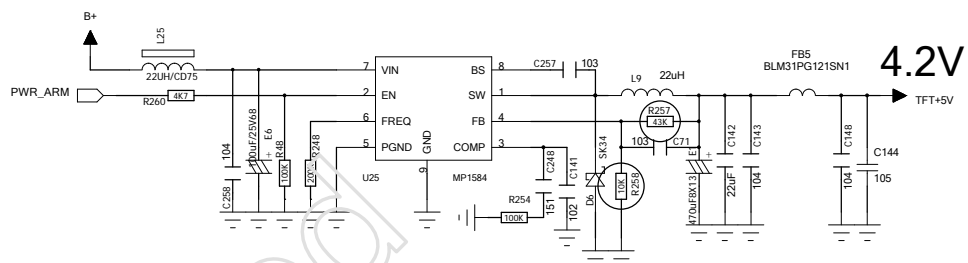
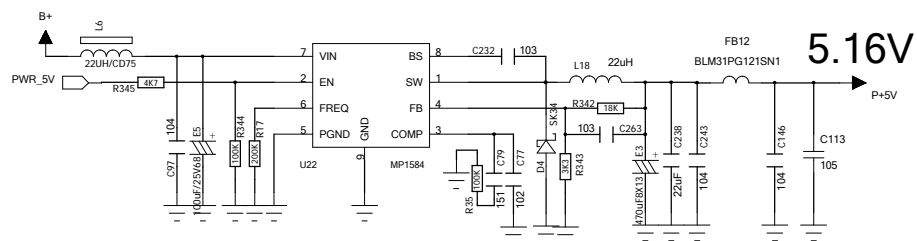
TV_VCC



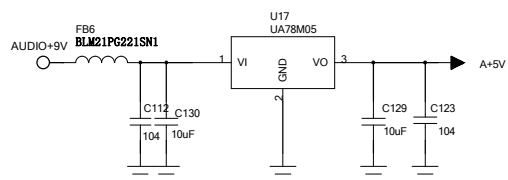
BRAKE



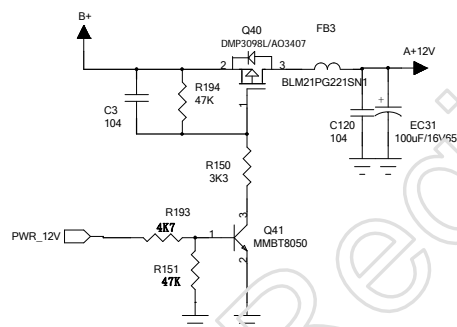
DC-DC



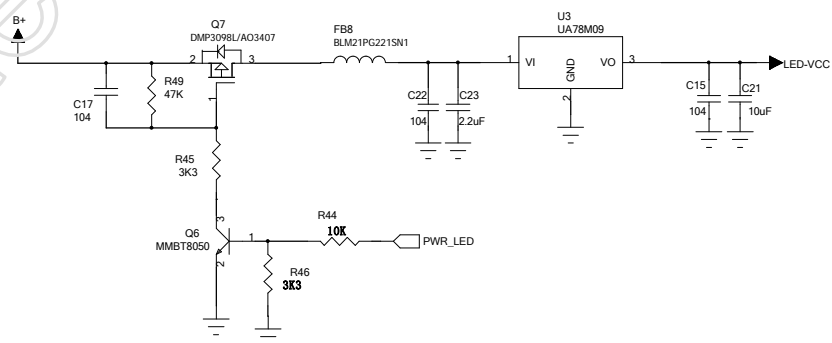
A 5V



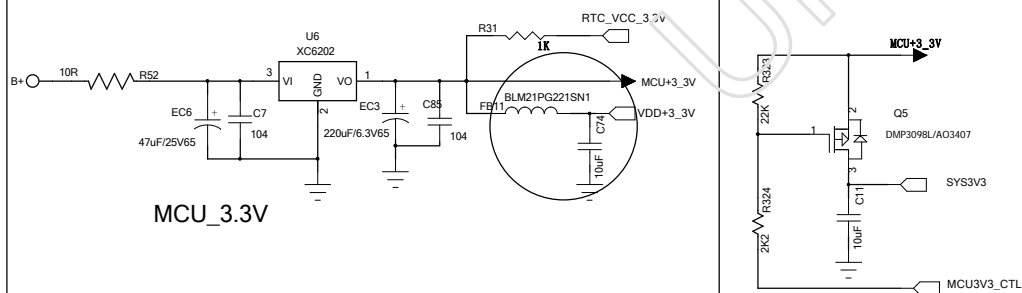
A+12V



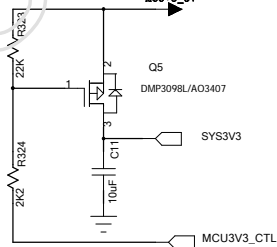
LAMP PWR



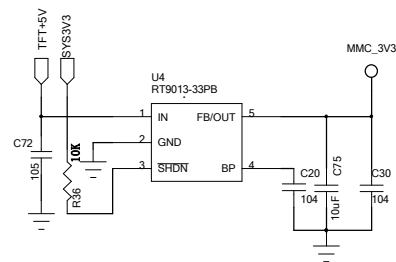
MCU 3.3V



~~SYS3.3V~~

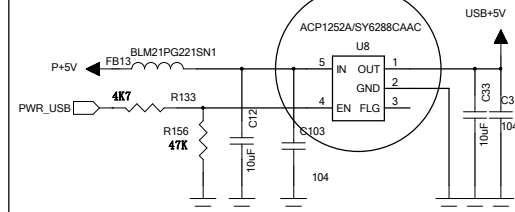


SDMMC VCC



USB VCC

1.5A过流保护IC



The diagram illustrates the system architecture with a central microcontroller (represented by a circle). The connections are as follows:

- Top Connections:**
 - Left: SYS3V3
 - Right: IP_DET
- Second Row Connections:**
 - Left: SYS3V3
 - Center: 47K resistor
 - Right: R315
 - Far Right: ILL-DET
- Third Row Connections:**
 - Left: MCU+_3V
 - Center: 47K resistor
 - Right: R316
 - Far Right: ACC-DET
- Fourth Row Connections (I2C Bus):**
 - Left: SYS3V3
 - Center: 4K7 resistor
 - Right: R305
 - Far Right: SCL
- Fifth Row Connections (I2C Bus):**
 - Center: 4K7 resistor
 - Right: R306
 - Far Right: SDA
- Sixth Row Connections (I2C Bus):**
 - Center: 4K7 resistor
 - Right: R7
 - Far Right: TV_SCL4_TX_IR
- Seventh Row Connections (I2C Bus):**
 - Center: 4K7 resistor
 - Right: R9
 - Far Right: TV_SDA4-RX
- Eighth Row Connections (I2C Bus):**
 - Center: 4K7 resistor
 - Right: R302
 - Far Right: SCL1_RADIO
- Ninth Row Connections (I2C Bus):**
 - Center: 4K7 resistor
 - Right: R304
 - Far Right: SDA1_RADIO
- Tenth Row Connections (I2C Bus):**
 - Center: 4K7 resistor
 - Right: R298
 - Far Right: SDA2_6502/3702/7026
- Eleventh Row Connections (I2C Bus):**
 - Center: 4K7 resistor
 - Right: R303
 - Far Right: SDA2_6502/3702/7026
- Twelfth Row Connections:**
 - Center: R255
 - Far Right: ADC DVD/TRIN
- Thirteenth Row Connections:**
 - Left: SYS3V3
 - Center: 47K resistor
 - Right: R256
 - Far Right: ADC DVD/TROUT
- Fourteenth Row Connections:**
 - Center: 47K resistor
 - Right: R153
 - Far Right: DVD-DISC-DET

5
4
3
2
1

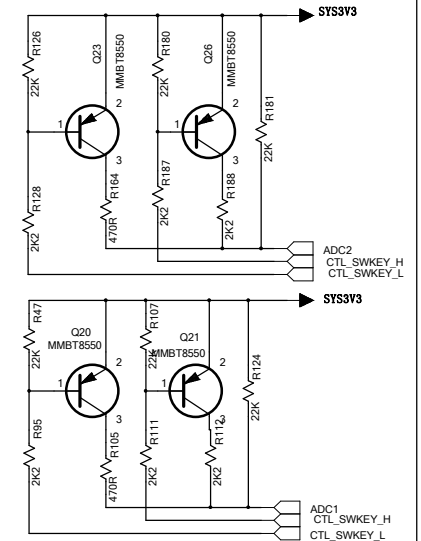
1K

M_RST
SYS_SWCLK
SYS_SWDIO
R101

MCU+3.3V

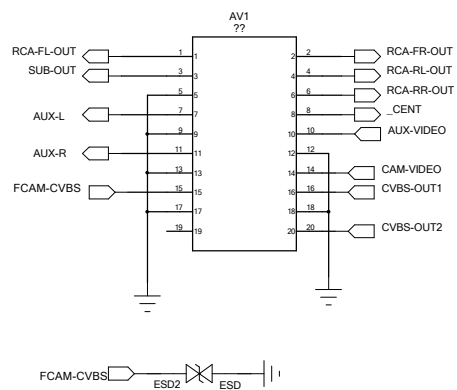
SP254M

CON10

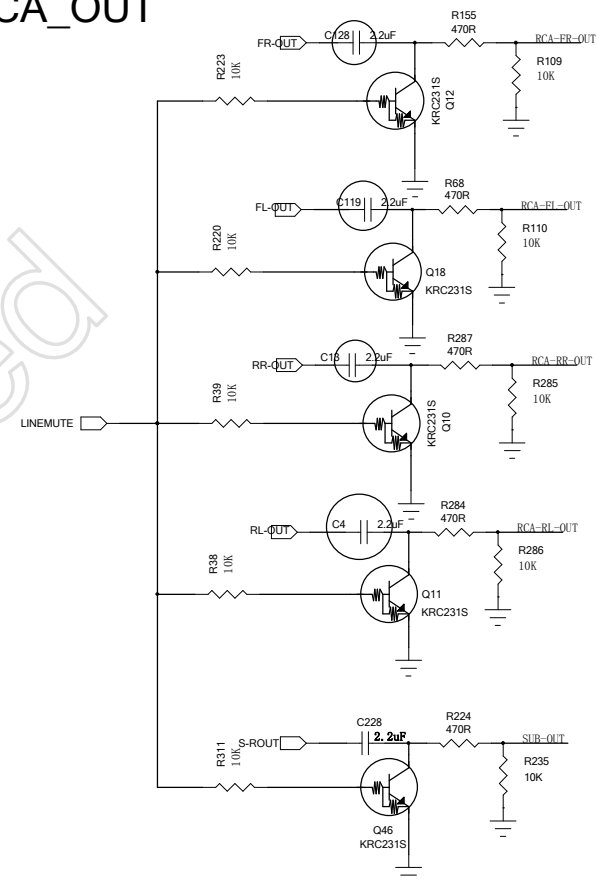
[illegible]

The diagram shows the B1754S component, which is a dual-diode device. It has two input pins on the left, one connected to a 3V source and the other to a 10K resistor R103. The output pins on the right are connected to ADC_B+ and B+ through a 100K resistor R104 and a capacitor C98. The component is labeled B1754S and has a pin number 103 indicated.

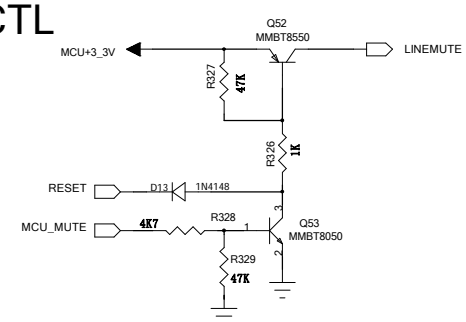
AV PUT



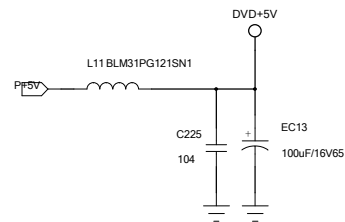
RCA_OUT



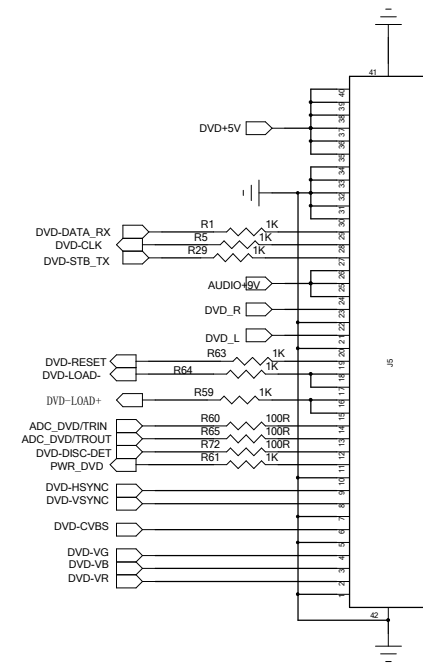
MUTE_CTL



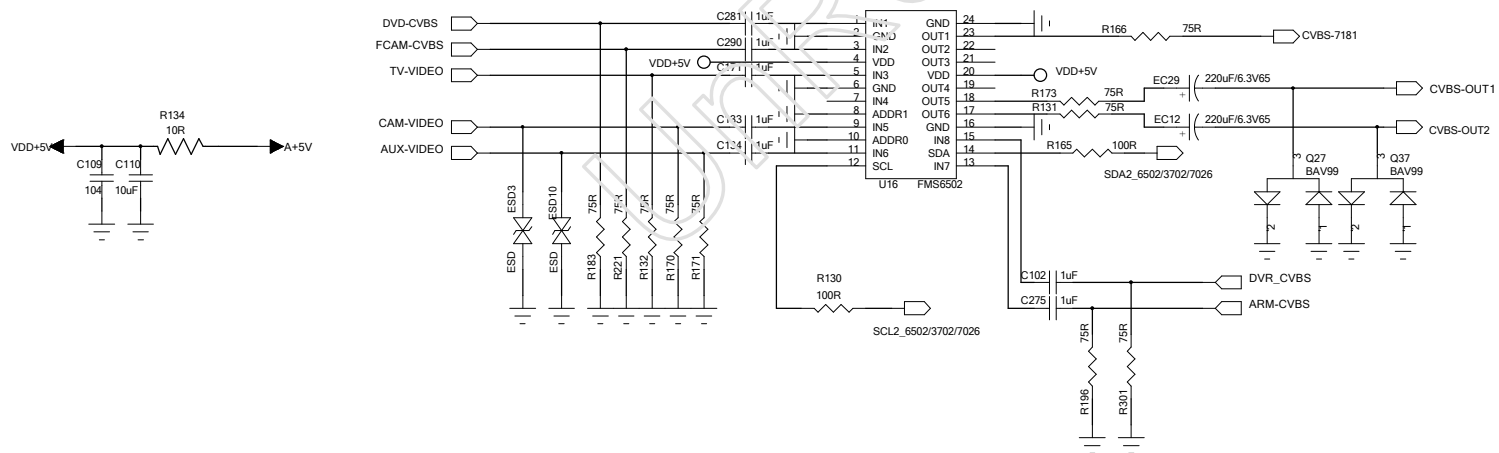
DVD_PWR



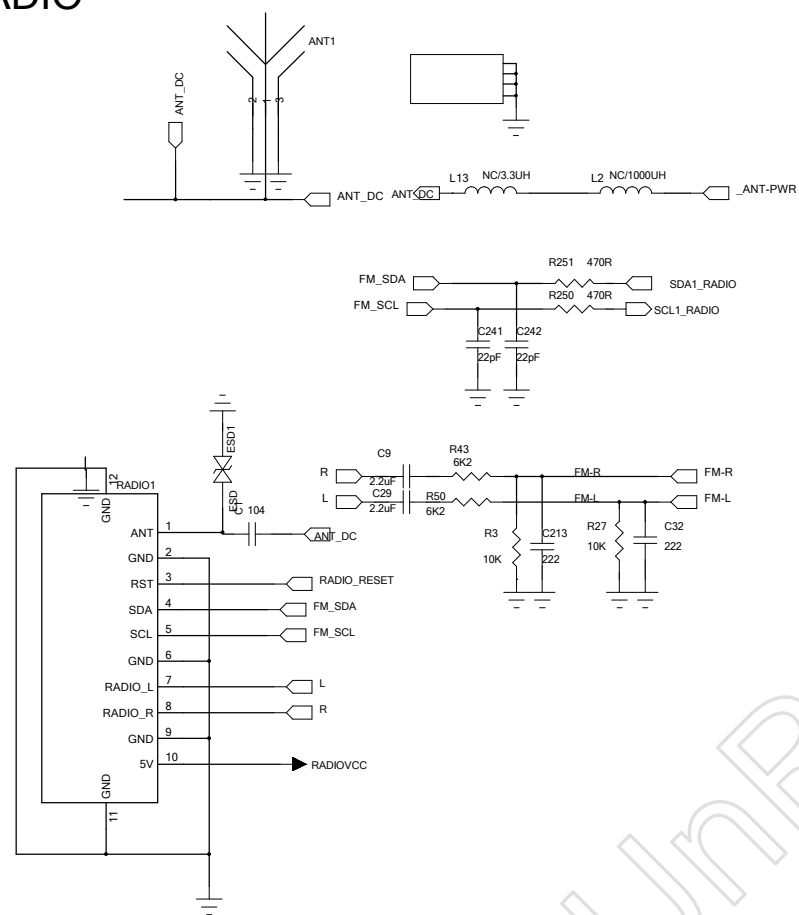
DVD_PUT



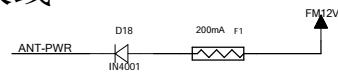
VIDEO_SW



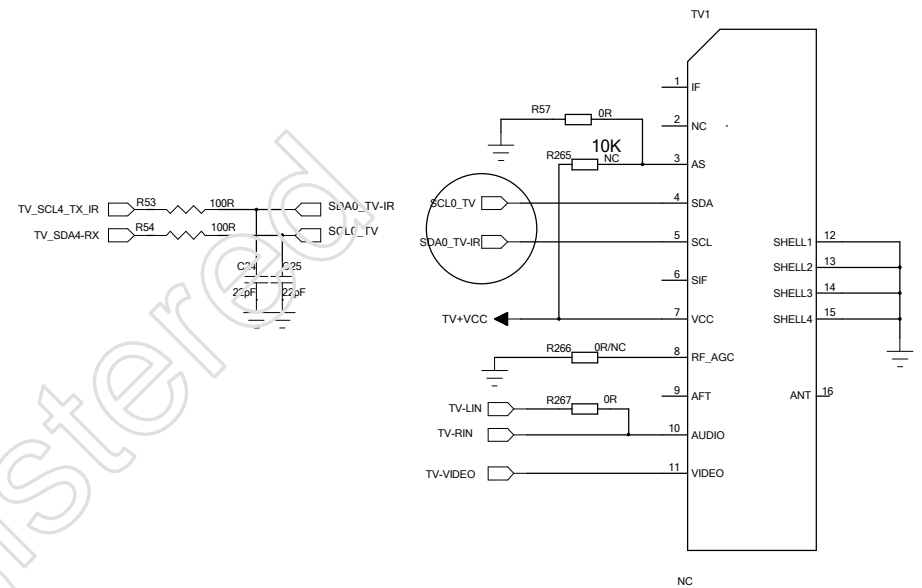
RADIO



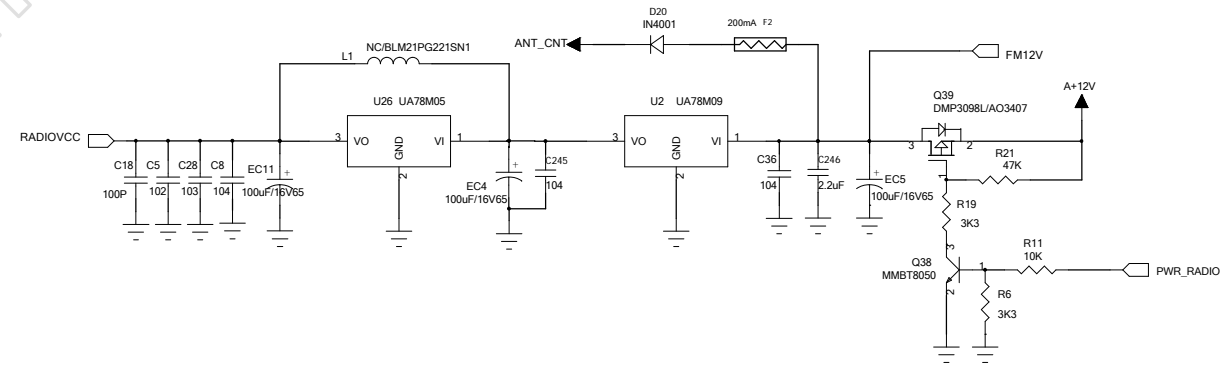
有源天线



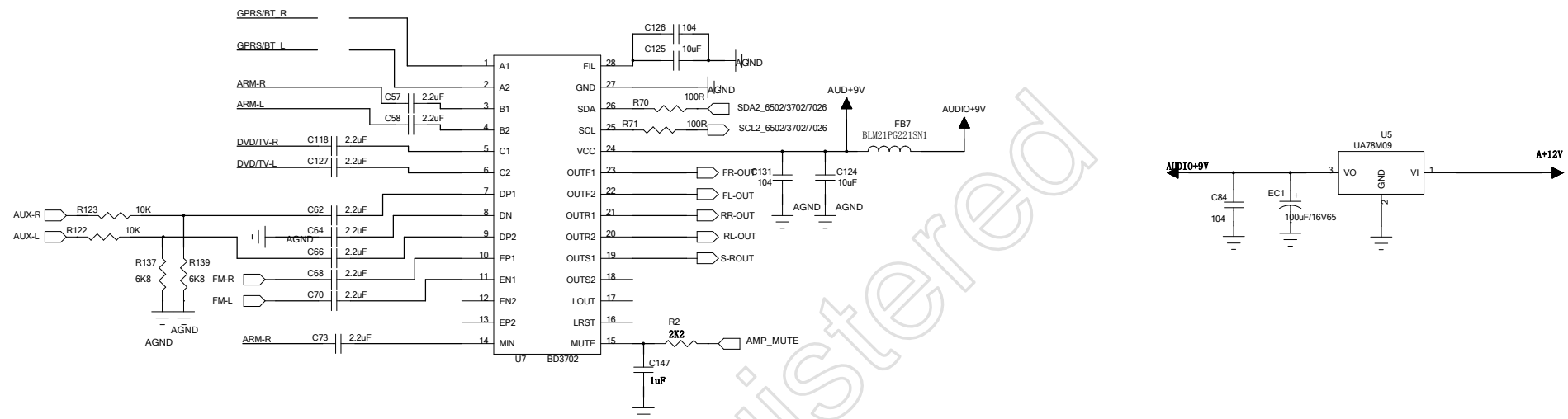
TV



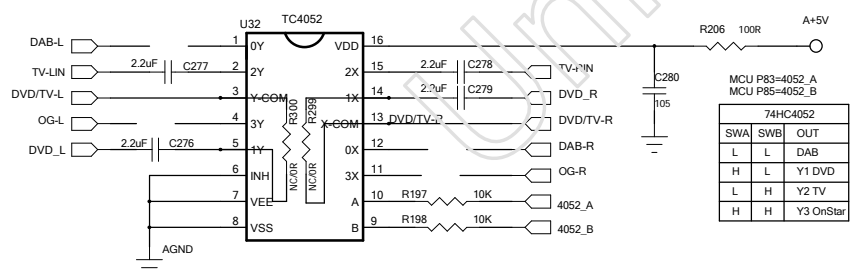
RADIO_PWR



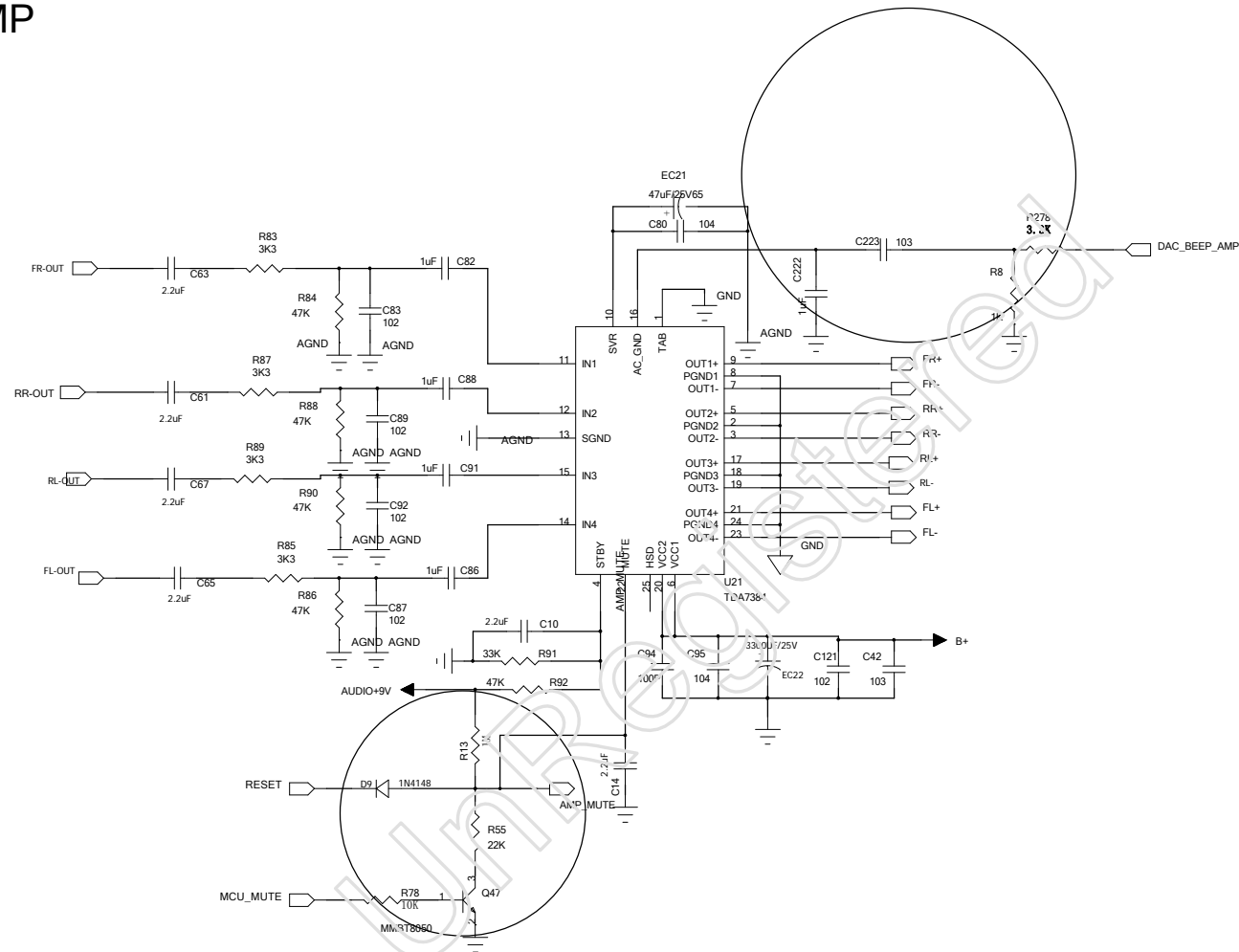
AUDIO

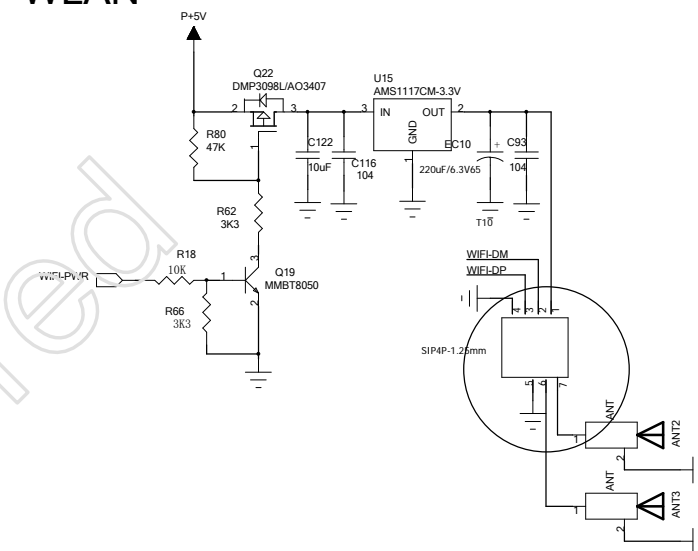


AUDIO_SW

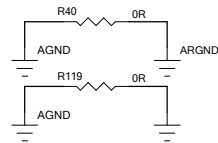


POWER_AMP

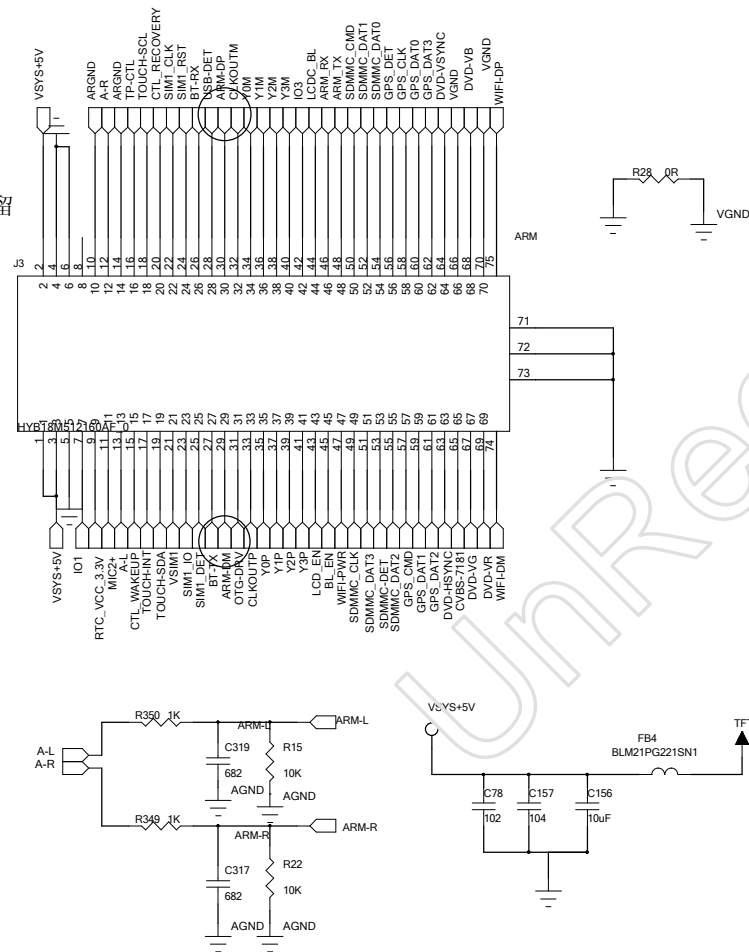
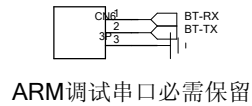




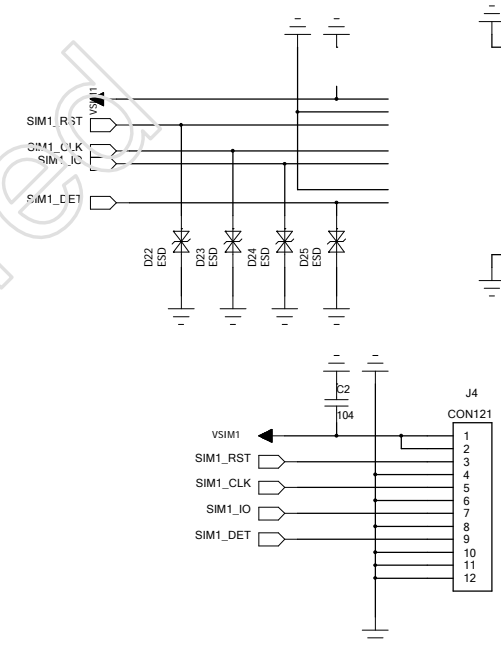
ARM



ARM音频地线必需分地，在3702处连接起来!
线宽不能小于0.8MM



3G_CARD



TFT

